

BOTANY AQUATIC CENTRE STAGE 1 CONTEXT PLAN



LEGEND

- - - Site boundary
- - - Extent of works / stage 1 boundary
- - - Fences
- Proposed trees to replace trees being removed due to new works. Tree species code refer to DA-2027-03
- Turf to make good works, match into existing open lawn
- Mass planting area with mulch. Low maintenance, tough and no climbable plants selected. Refer to plant schedule on sheet DA-2027-03 for species.


SITE IMAGES



Existing site



Existing picnic shelters




Suite 91, L5, 330 Wattle St  
Ultimo NSW 2007  
T. 02 9211 3744  
W. [www.sturtnoble.com.au](http://www.sturtnoble.com.au)  
landscape architecture  
environmental & urban design

PROJECT  
**BOTANY AQUATIC CENTRE STAGE 1**

CLIENT  
**BAYSIDE COUNCIL**

DRAWING  
**BOTANY AQUATIC CENTRE  
CONTEXT PLAN**

DRAWING No.	ISSUE	DRAWN	DATE
DA-2027-01	G	jc	27.09.2021



0 4 8 16 24m

Scale

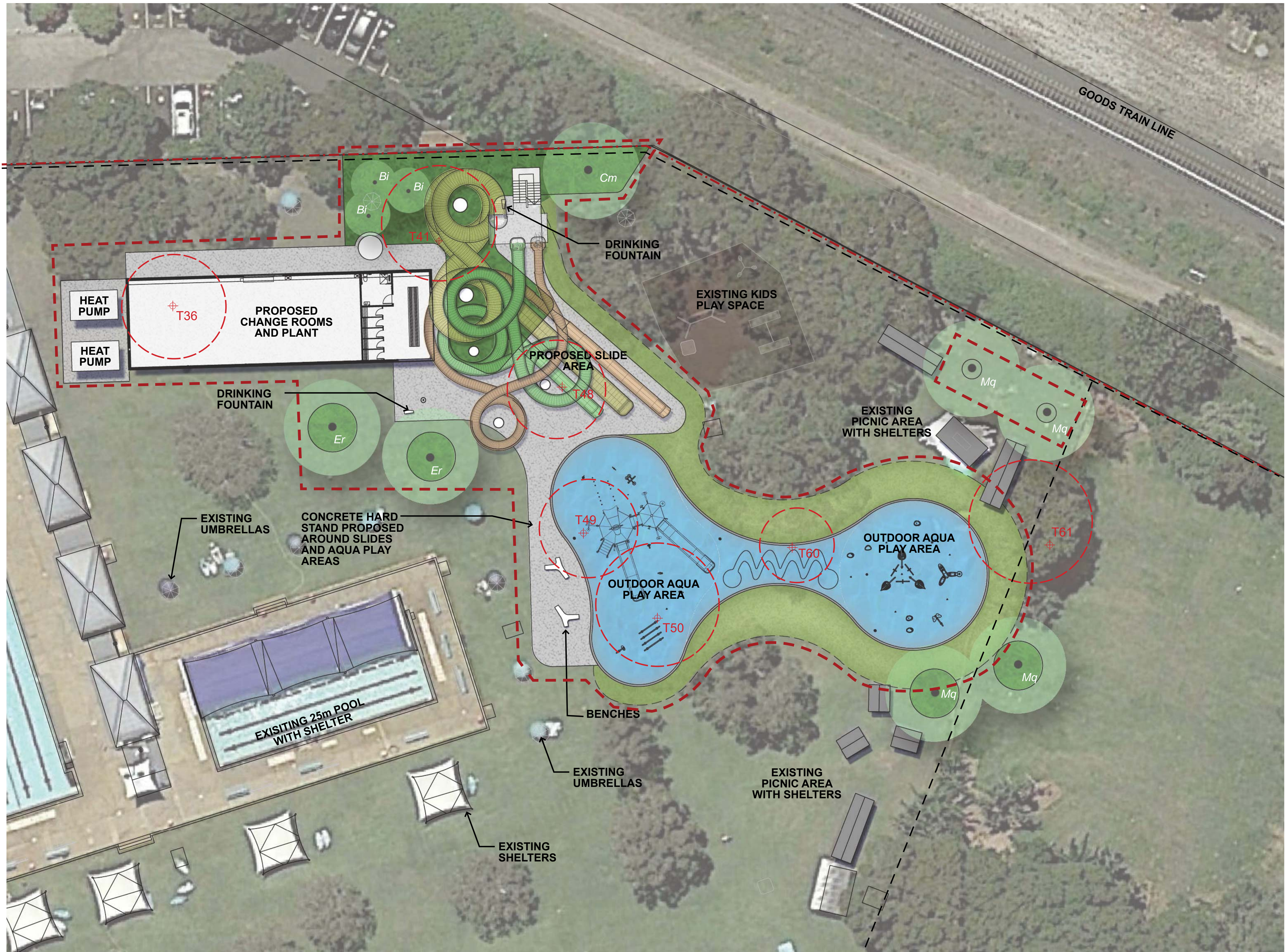
1:500@A1  
1:1000@A3

ACN: 164 245 514 ABN: 99 164 245 514

THIS DRAWING SHOULD BE READ IN CONJUNCTION WITH ALL RELEVANT CONTRACTS, SPECIFICATIONS, REPORTS AND DRAWINGS. COPYRIGHT OF THIS DRAWINGS IS VESTED IN STURT NOBLE ASSOCIATES PTY LTD.



STAGE 1 LANDSCAPE PLAN



LEGEND

- - - Site boundary
- - - Extent of works / stage 1 boundary
- - - Fences
- Proposed trees to replace trees being removed due to new works. Tree species code refer to DA-2027-03
- Existing trees to be removed. Tree numbers correlate with Arborist's report
- Turf to make good works, match into existing open lawn
- Mass planting area with mulch. Low maintenance, tough and no climbable plants selected. Refer to plant schedule on sheet DA-2027-03 for species.

**Sturt Noble**  
Associates

Suite 91, L5, 330 Wattle St  
Ultimo NSW 2007  
T. 02 9211 3744  
W. www.sturnoble.com.au  
landscape architecture  
environmental & urban design

PROJECT  
**BOTANY AQUATIC CENTRE STAGE 1**

CLIENT  
**BAYSIDE COUNCIL**

DRAWING  
**STAGE 1 LANDSCAPE PLAN**

DRAWING No.	ISSUE	DRAWN	DATE
DA-2027-02	F	jc	27.09.2021

Scale 0 2 10m  
1:200@A1  
1:400@A3

ACN: 164 245 514 ABN: 99 164 245 514  
THIS DRAWING SHOULD BE READ IN CONJUNCTION WITH ALL RELEVANT  
CONTRACTS, SPECIFICATIONS, REPORTS AND DRAWINGS. COPYRIGHT  
OF THIS DRAWINGS IS VESTED IN STURT NOBLE ASSOCIATES PTY LTD.



PLANT SCHEDULE

CODE	BOTANICAL NAME	COMMON NAME	POT SIZE	SPACING
TREES				
Bi	<i>Banksia integrifolia</i>	Coastal Banksia	75L	A.S.
Cm	<i>Corymbia maculata</i>	Spotted Gum	100L	A.S.
Er	<i>Eucalyptus robusta</i>	Swamp Mahogany	100L	A.S.
Mq	<i>Melaleuca quinquenervia</i>	Broad-leaved Paperbark	100L	A.S.
SHRUBS & GROUNDCOVERS				
	<i>Alpinia caerulea</i>	Native Ginger	5L	400mm
	<i>Banksia robur</i>	Swamp Banksia	25L	800mm
	<i>Cordyline petiolaris</i>	Broad-leaved Palm Lily	25L	800mm
	<i>Cycas revoluta</i>	Sago Palm	25L	800mm
	<i>Dianella caerulea</i> 'Breeze'	Breeze Flax Lily	150mm	300mm
	<i>Dianella</i> 'Silver Streak'	Silver Streak Flax Lily	150mm	300mm
	<i>Doryanthes excelsa</i>	Gymea Lily	25L	800mm
	<i>Lomandra longifolia</i> 'Tankia'	Lomandra tanika	150mm	300mm
	<i>Philodendron</i> 'Xanadu'	Philodendron Xanadu	5L	400mm
	<i>Syzygium australe</i> 'Resilience'	Lilly Pilly Resilience	75L	1200mm

TREE IMAGES



Banksia integrifolia



Corymbia maculata



Eucalyptus robusta



Melaleuca quinquenervia

PLANT IMAGES



Banksia robur



Cycas revoluta



Dianella caerulea 'Breeze'



Lomandra longifolia 'Tanika'



Philodendron 'Xanadu'



Syzygium australe 'Resilience'

FURNITURE



Benches for gatherings - Glassfibre reinforced concrete  
Twig Bench from Quatro Design



Drinking Fountain - Marine grade 316 stainless steel  
Prospect Drinking Fountain from Botton + Gardiner

PRECEDENT IMAGES




Steel edge to planters



Planters edging to lawn



Open lawn area



Suite 91, L5, 330 Wattle St  
Ultimo NSW 2007  
T. 02 9211 3744  
W. [www.sturnoble.com.au](http://www.sturnoble.com.au)  
landscape architecture  
environmental & urban design

PROJECT  
**BOTANY AQUATIC CENTRE STAGE 1**

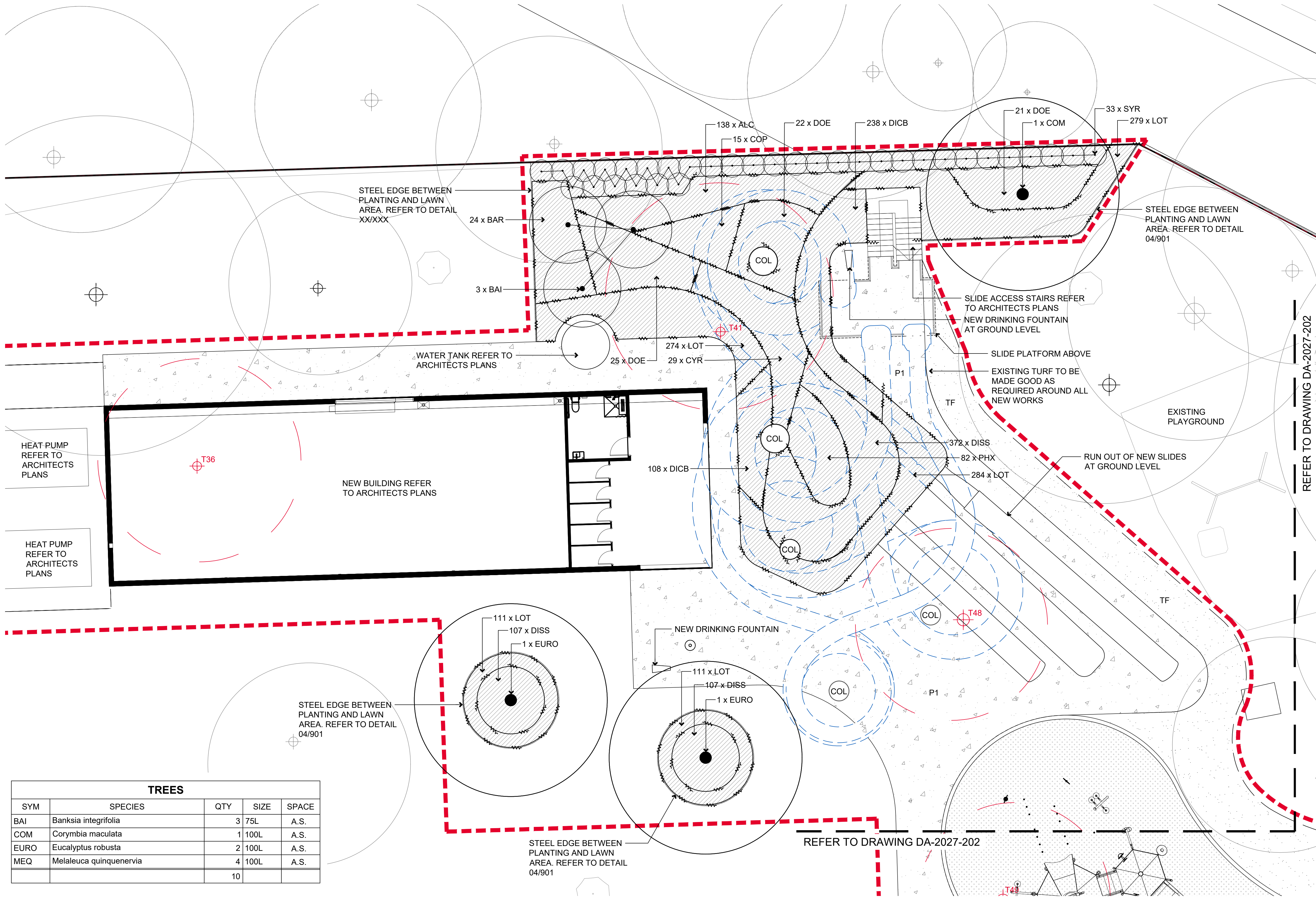
CLIENT  
**BAYSIDE COUNCIL**

DRAWING  
**STAGE 1 PLANT SCHEDULE**

DRAWING No.	ISSUE	DRAWN	DATE
<b>DA-2027-03</b>	<b>D</b>	<b>jc</b>	<b>27.09.2021</b>

ACN: 164 245 514 ABN: 99 164 245 514  
THIS DRAWING SHOULD BE READ IN CONJUNCTION WITH ALL RELEVANT  
CONTRACTS, SPECIFICATIONS, REPORTS AND DRAWINGS. COPYRIGHT  
OF THIS DRAWINGS IS VESTED IN STURT NOBLE ASSOCIATES PTY LTD.





TREES				
SYM	SPECIES	QTY	SIZE	SPACE
BAI	Banksia integrifolia	3	75L	A.S.
COM	Corymbia maculata	1	100L	A.S.
EURO	Eucalyptus robusta	2	100L	A.S.
MEQ	Melaleuca quinquenervia	4	100L	A.S.
		10		

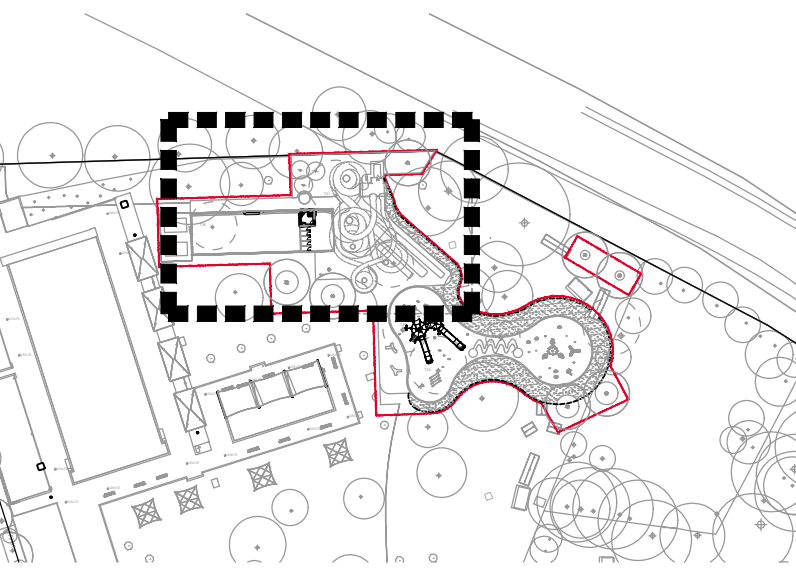
SHRUBS & GROUNDCOVERS				
SYM	SPECIES	QTY	SIZE	SPACE
ALC	Alpinia caerulea	138	5L	0.400
BAR	Banksia robur	24	25L	0.800
COP	Cordyline petiolaris	15	25L	0.800
CYR	Cycas revoluta	29	25L	0.800
DICB	Dianella caerulea 'Breeze'	346	150mm	0.300
DISS	Dianella 'Silver Streak'	800	150mm	0.300
DOE	Doryanthes excelsa	68	25L	0.800
LOT	Lomandra longifolia 'Tanika'	1281	150mm	0.300
PHX	Philodendron 'Xanadu'	82	5L	0.400
SYR	Syzygium australe 'Resilience'	33	75L	A.S.
		2816		

LEGEND

- EXTENT OF WORKS
- PROPERTY BOUNDARY
- SLIDES ABOVE
- COLUMNS TO SLIDE TOWERS
- EXISTING TREES TO BE RETAINED AND PROTECTED
- EXISTING TREES TO BE REMOVED. NUMBERS CORRELATE TO ARBORISTS REPORT

- PROPOSED TREES. REFER TO PLANTING SCHEDULE ON DA-2027-101 AND DETAIL 01/901
- CONCRETE PAVING. REFER TO ENGINEERS PLANS
- OUTDOOR AQUA PLAY AREA. REFER TO ARCHITECTS PLANS
- TURF. REFER TO DETAIL 05/901
- PLANTING. REFER TO PLANTING SCHEDULE ON DA-2027-101 AND DETAIL 03/901
- SHRUB PLANTING. REFER TO PLANTING SCHEDULE ON DA-2027-101 AND DETAIL 03/901

KEY PLAN



NOTES

GENERAL  
Read drawings in conjunction with the specification & details.  
Refer to drawings:  
DA-2027-100 Detailed Landscape Plan and Planting plan  
DA-2027-900 Landscape Details

Drawings are to be read in colour

Refer to Architect's and Engineer's Drawings for precise information regarding paving, finished levels, fences and drainage details.

For detailed site survey information refer to 'Botany Aquatic Centre, Botany', Job Ref. B04710, prepared by Project Surveyors on the 27.04.2020.

SERVICES  
Services to be confirmed on site. Before landscape work is commenced, Landscape contractor is to establish the positions of all service lines and protect them from damage during construction.

SETOUT  
All setout to be approved by Superintendent prior to construction.

WORKING AROUND EXISTING TREES  
Excavation within existing trees Protection Zone is to be carried out by hand.

If any concentration of roots or roots with a diameter of 50mm or more are uncovered in the new formation zone the contractor is to obtain advice & direction from Project Arborist.

REFER TO DRAWING DA-2027-202

REFER TO DRAWING DA-2027-202

A	ISSUE FOR DA	27.09.2021
ISSUE	DESCRIPTION	DATE

Suite 91, L5, 330 Wattle St  
Ultimo NSW 2007  
T: 02 9211 3744  
W: [www.sturt-noble.com.au](http://www.sturt-noble.com.au)  
landscape architecture  
environmental & urban design

PROJECT  
**BOTANY AQUATIC CENTRE  
STAGE 1**  
CLIENT  
**BAYSIDE COUNCIL**

DRAWING  
**DETAILED LANDSCAPE PLAN AND  
PLANTING PLAN 01**

DRAWING NUMBER  
**DA-2027-101**

ISSUE  
**A**

SCALE  
**1:100 @ A1  
1:200 @ A3**

DRWN  
**jw**

CHECKED  
**gs**

DIRECTOR  
**gs**

0 1 2 5 m

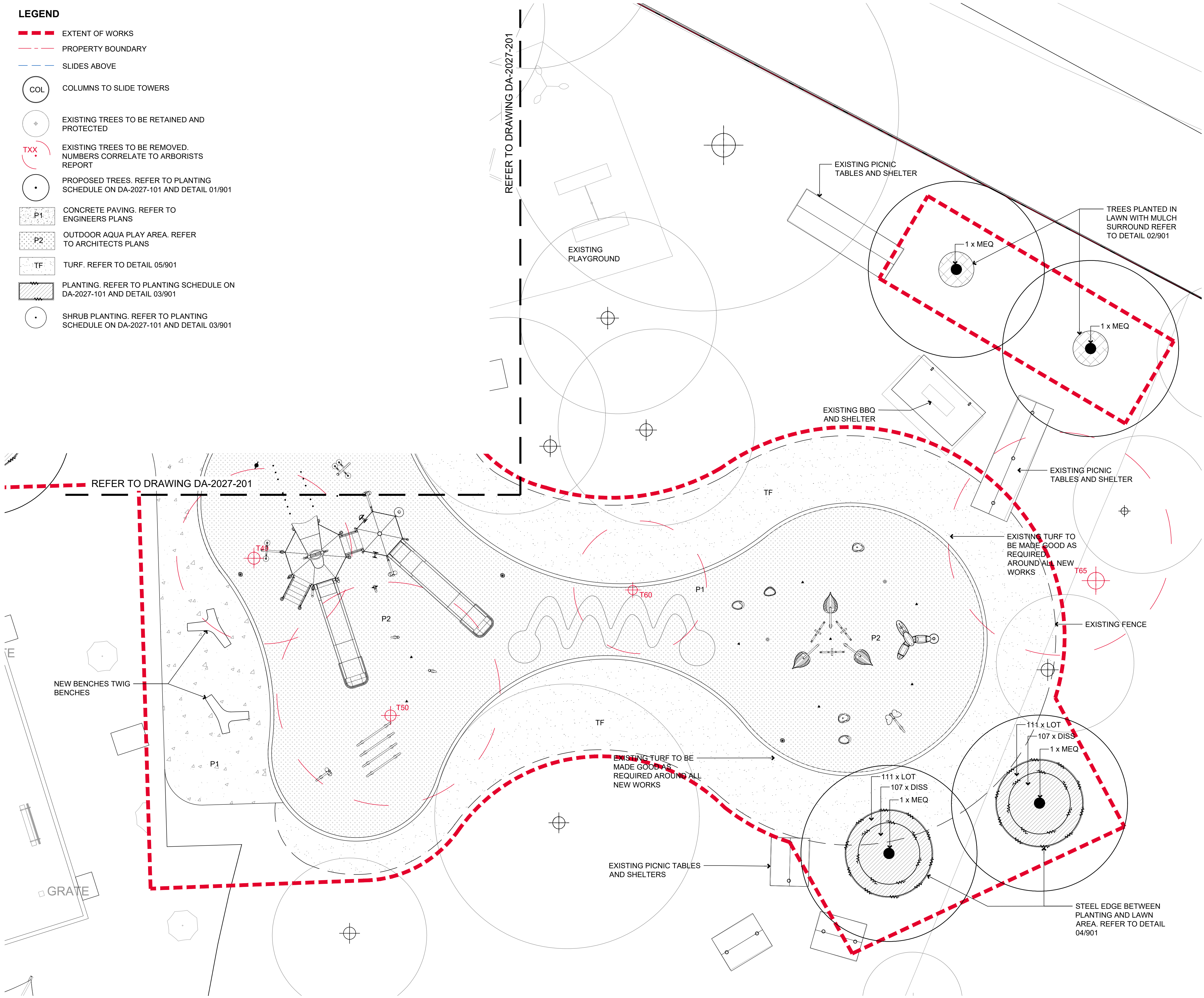
ACN: 164 245 514 ABN: 99 164 245 514

THIS DRAWING SHOULD BE READ IN CONJUNCTION WITH ALL RELEVANT CONTRACTS, SPECIFICATIONS, REPORTS AND DRAWINGS. COPYRIGHT OF THIS DRAWING IS VESTED IN STURT NOBLE ASSOCIATES PTY LTD.

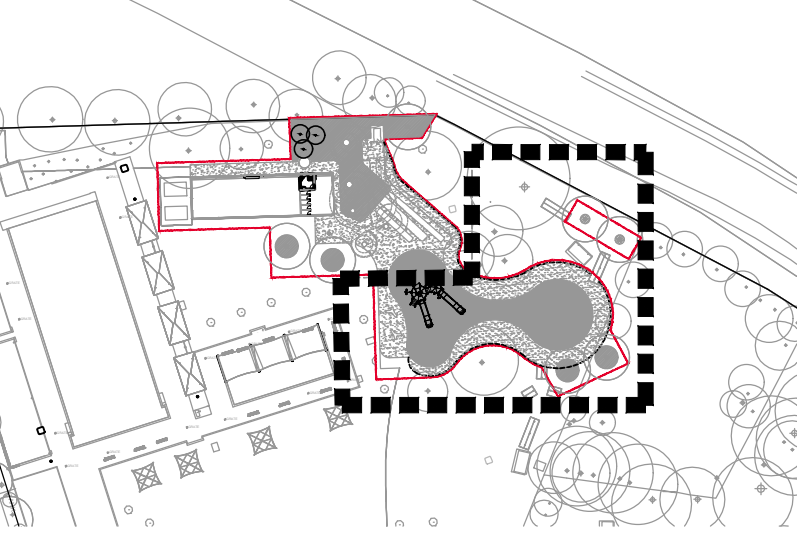


LEGEND

- EXTENT OF WORKS
- PROPERTY BOUNDARY
- SLIDES ABOVE
- COL COLUMNS TO SLIDE TOWERS
- EXISTING TREES TO BE RETAINED AND PROTECTED
- EXISTING TREES TO BE REMOVED. NUMBERS CORRELATE TO ARBORISTS REPORT
- PROPOSED TREES. REFER TO PLANTING SCHEDULE ON DA-2027-101 AND DETAIL 01/901
- P1 CONCRETE PAVING. REFER TO ENGINEERS PLANS
- P2 OUTDOOR AQUA PLAY AREA. REFER TO ARCHITECTS PLANS
- TF TURF. REFER TO DETAIL 05/901
- PLANTING. REFER TO PLANTING SCHEDULE ON DA-2027-101 AND DETAIL 03/901
- SHRUB PLANTING. REFER TO PLANTING SCHEDULE ON DA-2027-101 AND DETAIL 03/901



KEY PLAN



NOTES

GENERAL  
Read drawings in conjunction with the specification & details.  
Refer to drawings:  
DA-2027-100 Detailed Landscape Plan and Planting plan  
DA-2027-900 Landscape Details

Drawings are to be read in colour

Refer to Architect's and Engineer's Drawings for precise information regarding paving, finished levels, fences and drainage details.

For detailed site survey information refer to 'Botany Aquatic Centre, Botany', Job Ref: B04710, prepared by Project Surveyors on the 27.04.2020.

SERVICES  
Services to be confirmed on site. Before landscape work is commenced, Landscape contractor is to establish the positions of all service lines and protect them from damage during construction.

SETOUT  
All setout to be approved by Superintendent prior to construction.

WORKING AROUND EXISTING TREES  
Excavation within existing trees Protection Zone is to be carried out by hand.

If any concentration of roots or roots with a diameter of 50mm or more are uncovered in the new formation zone the contractor is to obtain advice & direction from Project Arborist.

A	ISSUE FOR DA	27.09.2021
ISSUE	DESCRIPTION	DATE

Suite 91, L5, 330 Wattle St  
Ultimo NSW 2007  
T: 02 9211 3744  
W: [www.sturt-noble.com.au](http://www.sturt-noble.com.au)  
landscape architecture  
environmental & urban design

PROJECT  
**BOTANY AQUATIC CENTRE  
STAGE 1**

CLIENT  
**BAYSIDE COUNCIL**

DRAWING  
**DETAILED LANDSCAPE PLAN AND  
PLANTING PLAN 02**

DRAWING NUMBER  
**DA-2027-102**

ISSUE  
**A**

SCALE  
1:100 @ A1  
1:200 @ A3

DRAWN  
**jw**

CHECKED  
**gs**

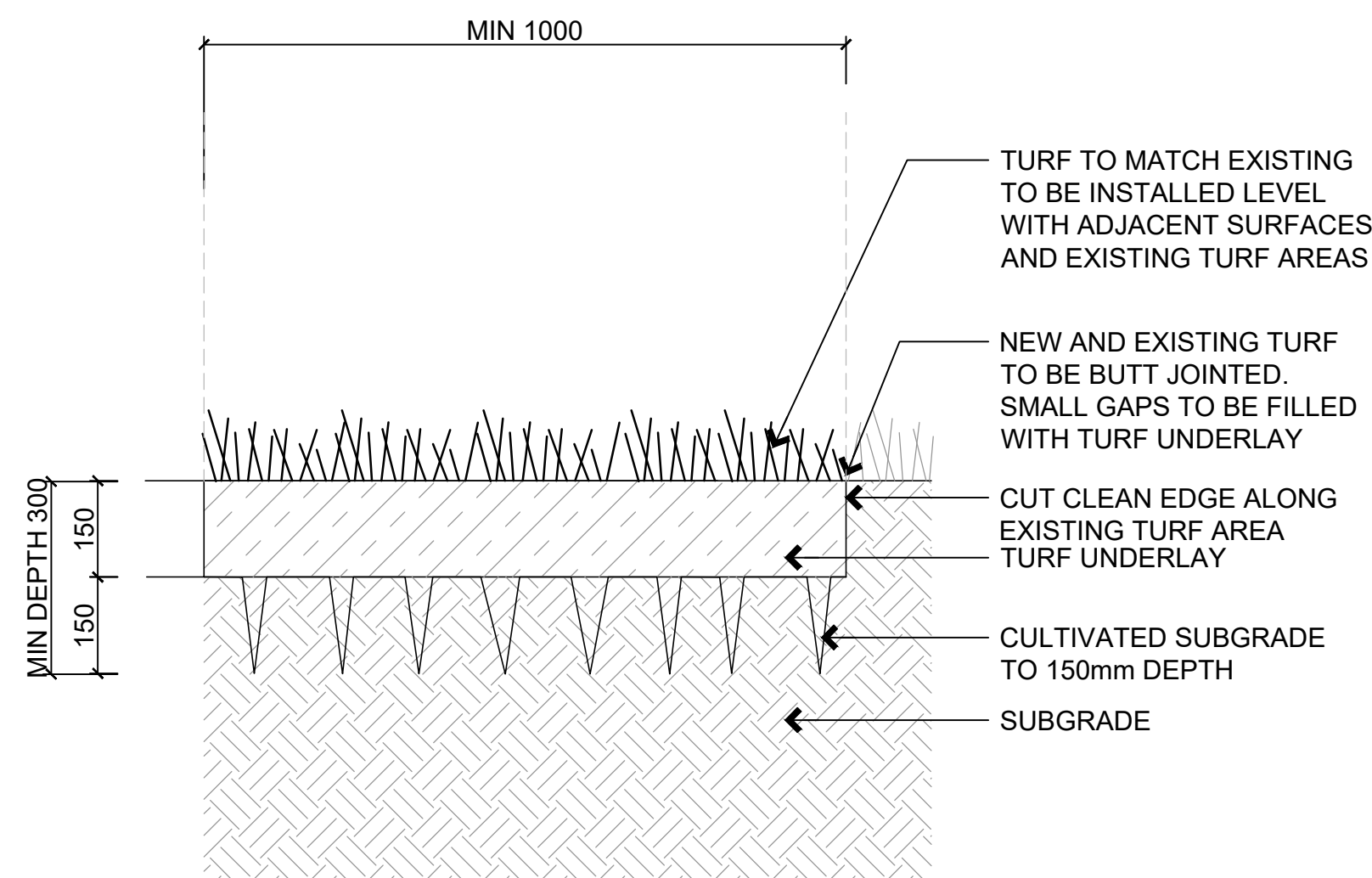
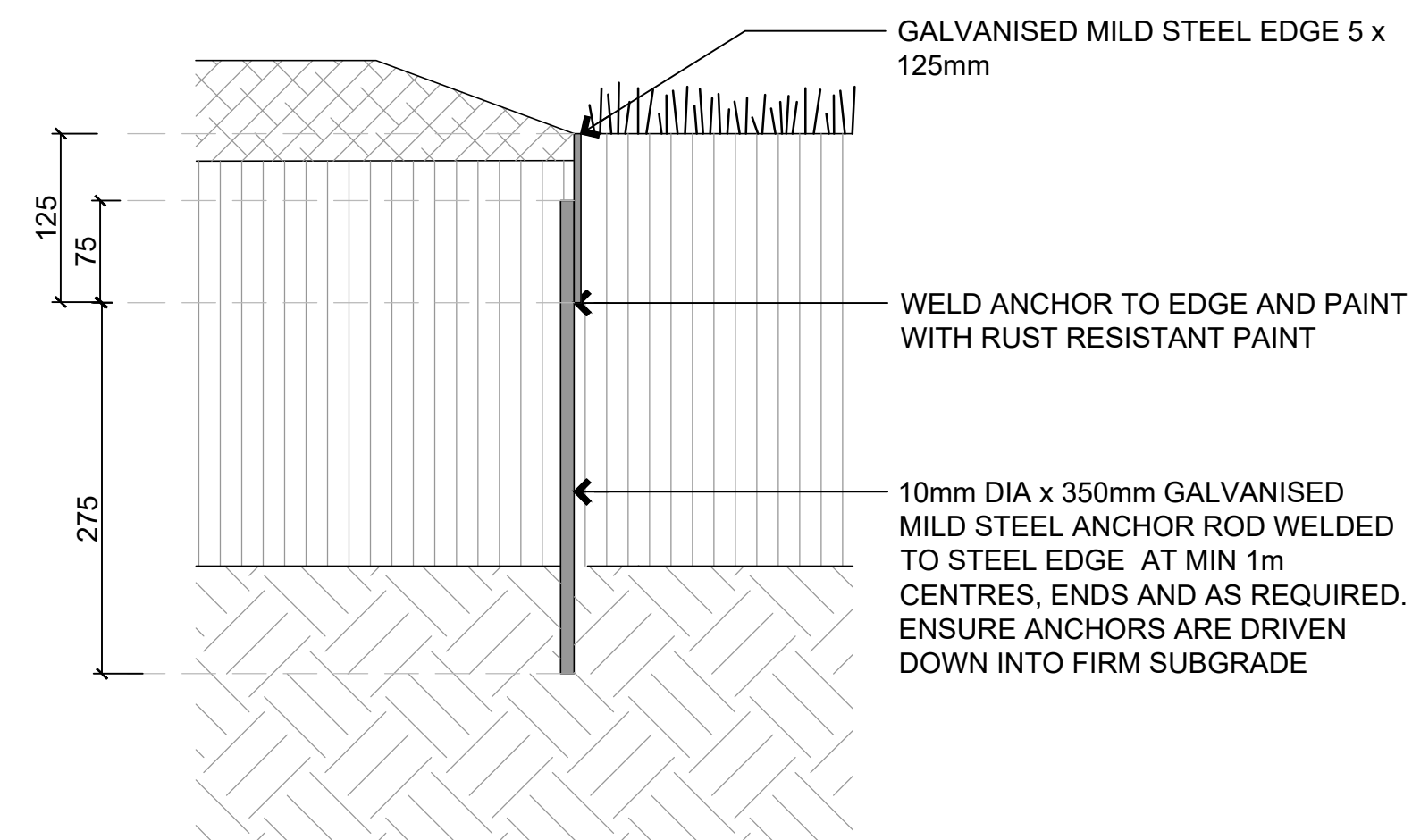
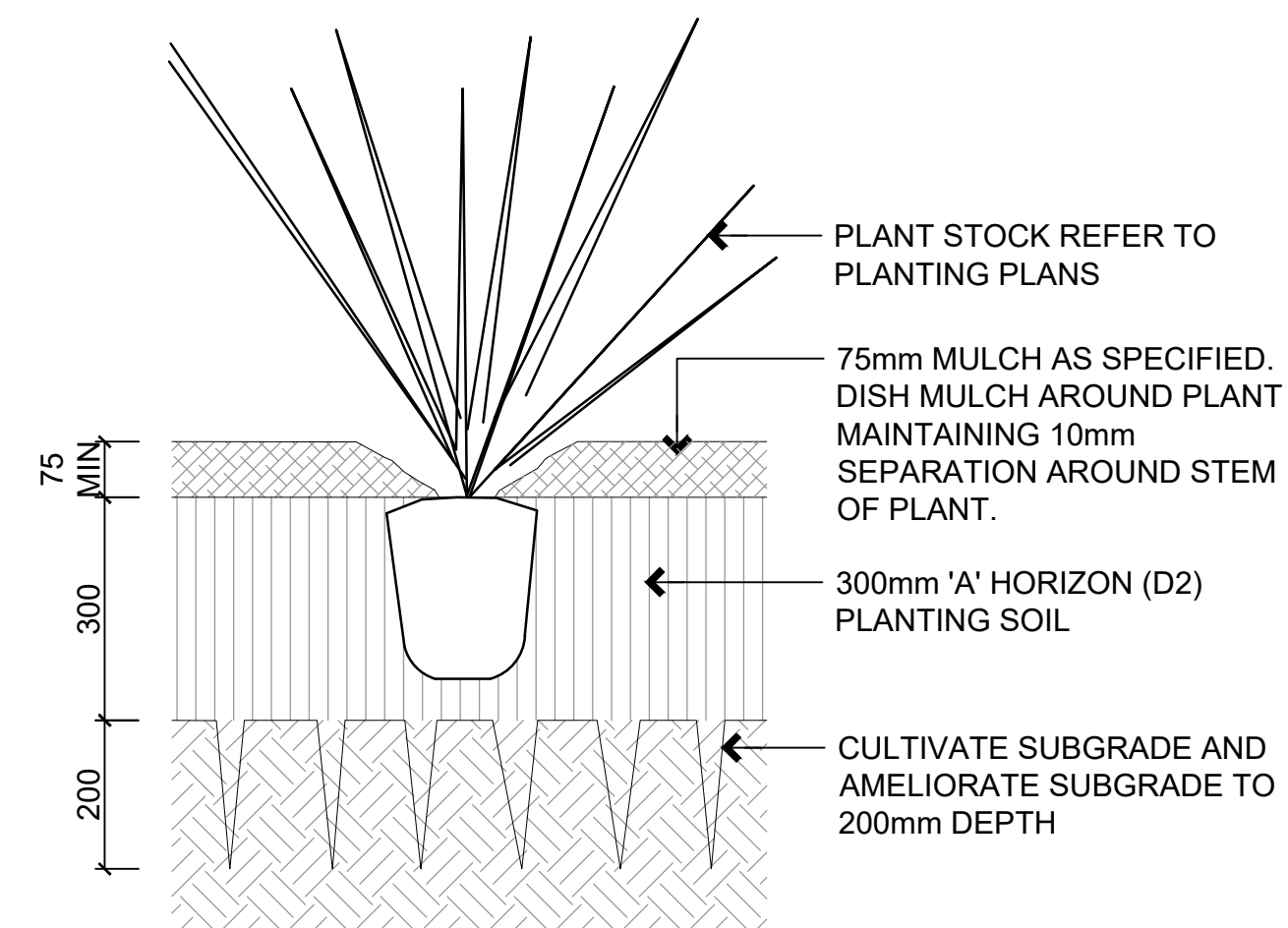
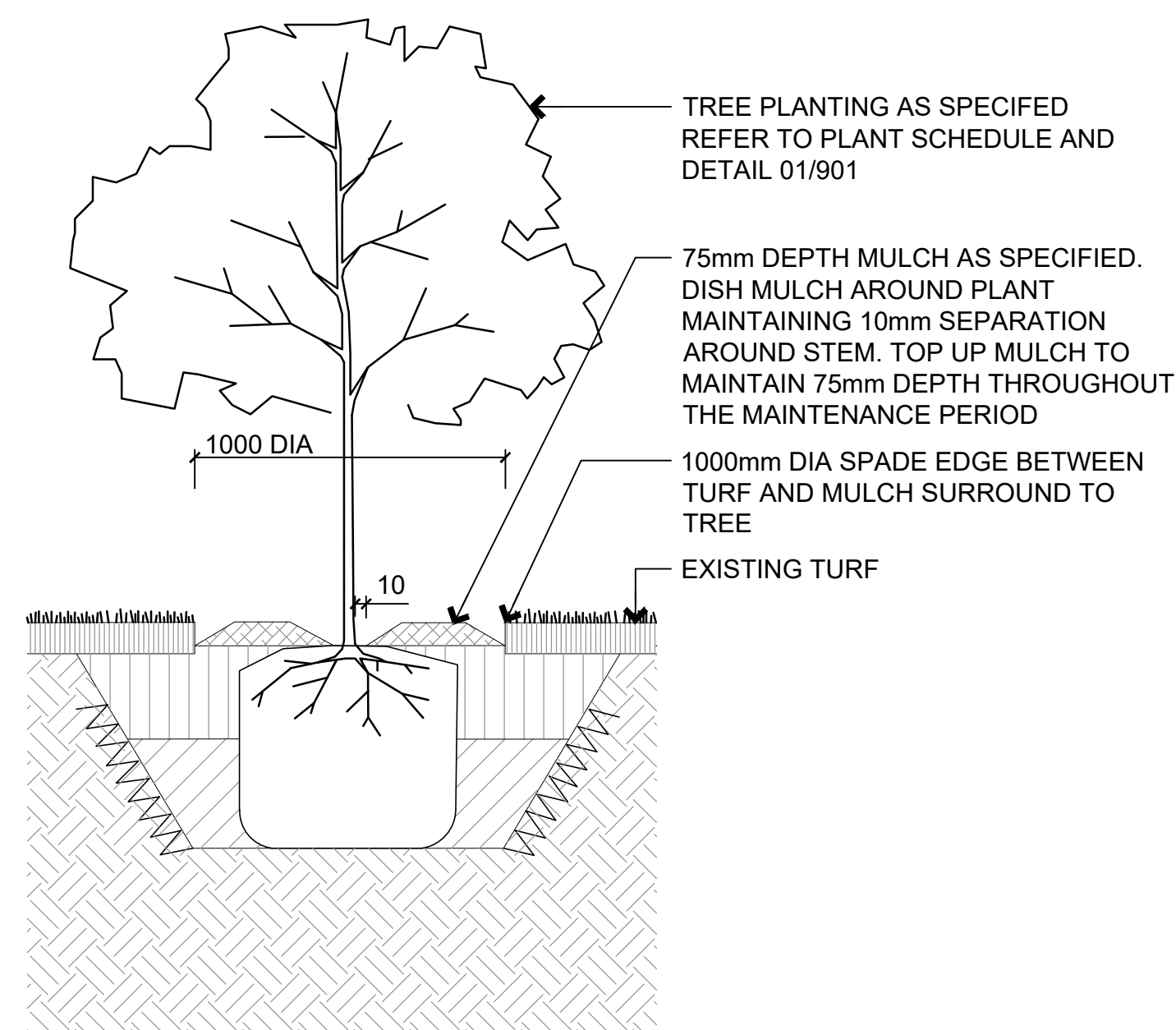
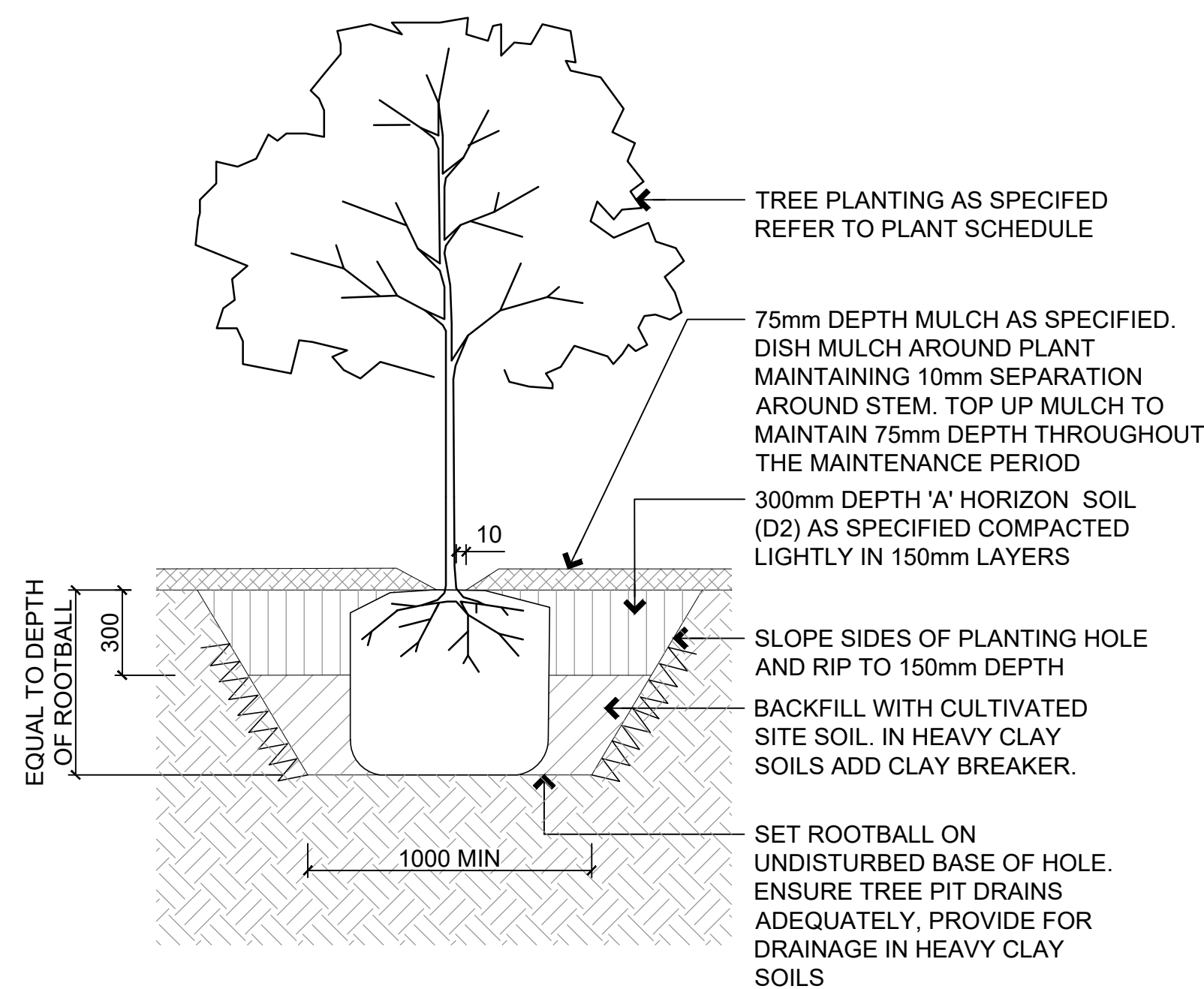
DIRECTOR  
**gs**

0 1 2 5 m

ACN: 164 245 514 ABN: 99 164 245 514

THIS DRAWING SHOULD BE READ IN CONJUNCTION WITH ALL RELEVANT CONTRACTS, SPECIFICATIONS, REPORTS AND DRAWINGS. COPYRIGHT OF THIS DRAWING IS VESTED IN STURT NOBLE ASSOCIATES PTY LTD.





## NOTES

## GENERAL

Read drawings in conjunction with the specification & details.  
Refer to drawings;  
DA-2027-100 Detailed Landscape Plan and Planting plan  
DA-2027-900 Landscape Details

Drawings are to be read in colour

Refer to Architect's and Engineer's Drawings for precise information regarding paving, finished levels, fences and drainage details.

For detailed site survey information refer to 'Botany Aquatic Centre, Botany', Job Ref: B04710, prepared by Project Surveyors on the 27.04.2020.

## SERVICES

Services to be confirmed on site. Before landscape work is commenced, Landscape contractor is to establish the positions of all service lines and protect them from damage during construction.

## SETOUT

All setout to be approved by Superintendent prior to construction.

## WORKING AROUND EXISTING TREES

Excavation within existing trees Protection Zone is to be carried out by hand.

If any concentration of roots or roots with a diameter of 50mm or more are uncovered in the new formation zone the contractor is to obtain advice & direction from Project Arborist.

A	ISSUE FOR DA	27.09.2021
ISSUE	DESCRIPTION	DATE



Suite 91, L5, 330 Wattle St  
Ultimo NSW 2007  
T. 02 9211 3744  
W. [www.sturtnoble.com.au](http://www.sturtnoble.com.au)  
landscape architecture  
environmental & urban design

PROJECT

**BOTANY AQUATIC CENTRE  
STAGE 1**

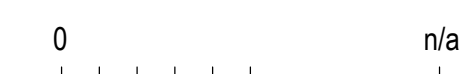
CUENT

BAYSIDE COUNCIL

DRAWING

## LANDSCAPE DETAILS

DRAWING NUMBER	ISSUE		
DA-2027-901	A		
SCALE	DRAWN	CHECKED	DIRECTOR
AS SHOWN @ A1	jw	gs	gs



ACN: 164 245 514 ABN: 99 164 245 514

THIS DRAWING SHOULD BE READ IN CONJUNCTION WITH ALL RELEVANT CONTRACTS, SPECIFICATIONS, REPORTS AND DRAWINGS. COPYRIGHT OF THIS DRAWING IS VESTED IN STURT NOBLE ASSOCIATES PTY LTD.